

南京诺金电气有限公司

Nanjing Nowking Electric Co., Ltd

开口式护线环样本



产品名称：开口式护线环

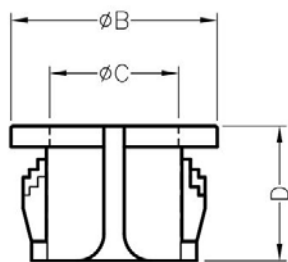
规格型号：COH-001

- ◆ MATERIAL: NYLON 66(UL)
- ◆ FLAME CLASS: 94V-2, 94V-0
- ◆ COLOR: BLACK
- ◆ UNIT: mm

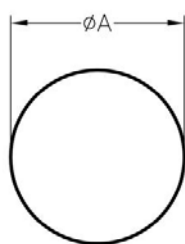
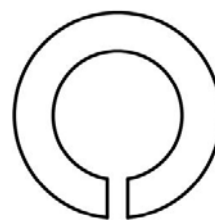
用途：用于机壳的电线出线口，保护电线不受机壳刮伤，装配容易。

采开口式量法

COH-001 结构图



THICKNESS E



MOUNTING HOLE

PART NO	A	B	C	D	E	PACKAGE
COH-001	$\phi 12.7$	$\phi 15.0$	$\phi 9.7$	9.8	0.8~3.3	1000

(规格 / 尺寸) 代码说明：

E : 装配板厚

南京诺金电气有限公司

Nanjing Nowking Electric Co., Ltd



产品名称：开口式护线环

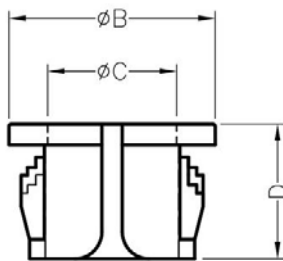
规格型号：COH-002

- ◆ MATERIAL: NYLON 66(UL)
- ◆ FLAME CLASS: 94V-2, 94V-0
- ◆ COLOR: BLACK
- ◆ UNIT: mm

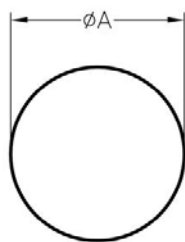
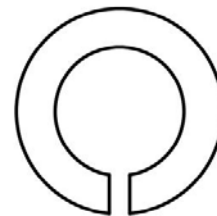
用途：用于机壳的电线出线口，保护电线不受机壳刮伤，装配容易。

采开口式量法

COH-002 结构图



THICKNESS E



MOUNTING HOLE

PART NO	A	B	C	D	E	PACKAGE
COH-002	Ø15.9	Ø18.4	Ø12.8	10.4	0.8~3.3	1000

(规格 / 尺寸) 代码说明：

E : 装配板厚

南京诺金电气有限公司

Nanjing Nowking Electric Co., Ltd



产品名称：开口式护线环

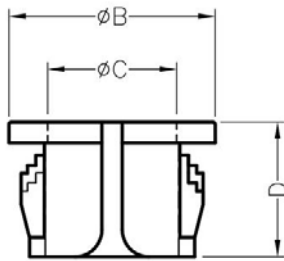
规格型号：COH-003

- ◆ MATERIAL: NYLON 66(UL)
- ◆ FLAME CLASS: 94V-2, 94V-0
- ◆ COLOR: BLACK
- ◆ UNIT: mm

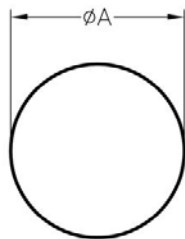
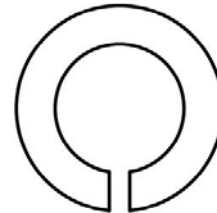
用途：用于机壳的电线出线口，保护电线不受机壳刮伤，装配容易。

采开口式量法

COH-003 结构图



THICKNESS E



MOUNTING HOLE

PART NO	A	B	C	D	E	PACKAGE
COH-003	Ø19.0	Ø20.7	Ø15.1	10.4	0.8~3.3	1000

(规格 / 尺寸) 代码说明：

E : 装配板厚

南京诺金电气有限公司

Nanjing Nowking Electric Co., Ltd



产品名称：开口式护线环

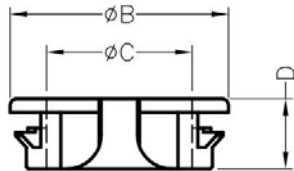
规格型号：COH-004

- ◆ MATERIAL: NYLON 66(UL)
- ◆ FLAME CLASS: 94V-2, 94V-0
- ◆ COLOR: BLACK
- ◆ UNIT: mm

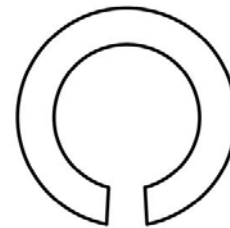
用途：用于机壳的电线出线口，保护电线不受机壳刮伤，装配容易。

采开口式量法

COH-004 结构图



THICKNESS E



MOUNTING HOLE

PART NO	A	B	C	D	E	PACKAGE
COH-004	7.0	10.4	6.0	4.8	0.8~1.0	1000

(规格 / 尺寸) 代码说明：

E : 装配板厚

南京诺金电气有限公司

Nanjing Nowking Electric Co., Ltd



产品名称：开口式护线环

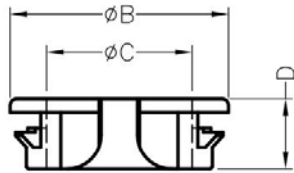
规格型号：COH-005

- ◆ MATERIAL: NYLON 66(UL)
- ◆ FLAME CLASS: 94V-2, 94V-0
- ◆ COLOR: BLACK
- ◆ UNIT: mm

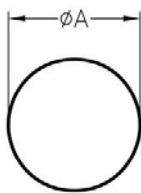
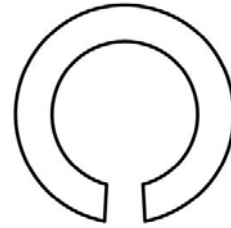
用途：用于机壳的电线出线口，保护电线不受机壳刮伤，装配容易。

采开口式量法

COH-005 结构图



THICKNESS E



MOUNTING HOLE

PART NO	A	B	C	D	E	PACKAGE
COH-005	12.7	16.2	10.8	5.2	0.8~1.0	1000

(规格 / 尺寸) 代码说明：

E : 装配板厚

南京诺金电气有限公司

Nanjing Nowking Electric Co., Ltd



产品名称：开口式护线环

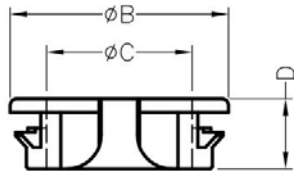
规格型号：COH-006

- ◆ MATERIAL: NYLON 66(UL)
- ◆ FLAME CLASS: 94V-2, 94V-0
- ◆ COLOR: BLACK
- ◆ UNIT: mm

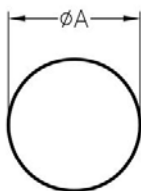
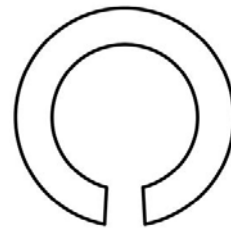
用途：用于机壳的电线出线口，保护电线不受机壳刮伤，装配容易。

采开口式量法

COH-006 结构图



THICKNESS E



MOUNTING HOLE

PART NO	A	B	C	D	E	PACKAGE
COH-006	16.0	19.3	13.0	5.2	0.8~1.0	500

(规格 / 尺寸) 代码说明：

E : 装配板厚

南京诺金电气有限公司

Nanjing Nowking Electric Co., Ltd



产品名称：开口式护线环

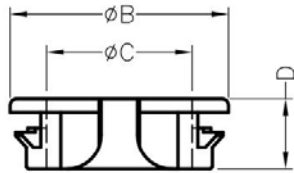
规格型号：COH-007

- ◆ MATERIAL: NYLON 66(UL)
- ◆ FLAME CLASS: 94V-2, 94V-0
- ◆ COLOR: BLACK
- ◆ UNIT: mm

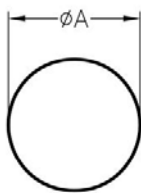
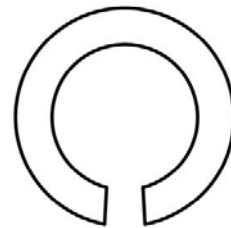
用途：用于机壳的电线出线口，保护电线不受机壳刮伤，装配容易。

采用开口式量法

COH-007 结构图



THICKNESS E



MOUNTING HOLE

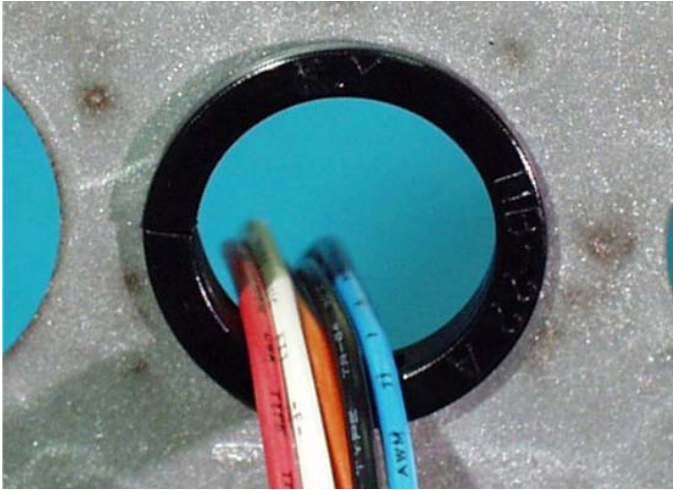
PART NO	A	B	C	D	E	PACKAGE
COH-007	19.0	23.0	15.6	5.5	0.8~1.0	500

(规格 / 尺寸) 代码说明：

E : 装配板厚

南京诺金电气有限公司

Nanjing Nowking Electric Co., Ltd



产品名称：开口式护线环

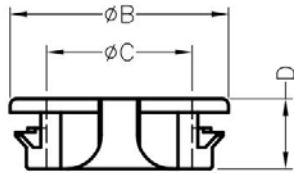
规格型号：COH-008

- ◆ MATERIAL: NYLON 66(UL)
- ◆ FLAME CLASS: 94V-2, 94V-0
- ◆ COLOR: BLACK
- ◆ UNIT: mm

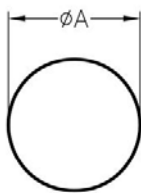
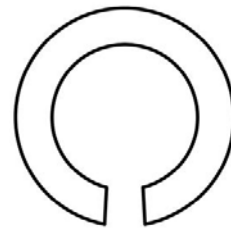
用途：用于机壳的电线出线口，保护电线不受机壳刮伤，装配容易。

采开口式量法

COH-008 结构图



THICKNESS E



MOUNTING HOLE

PART NO	A	B	C	D	E	PACKAGE
COH-008	21.0	25.0	19.0	5.6	0.8~1.0	500

(规格 / 尺寸) 代码说明：

E : 装配板厚

南京诺金电气有限公司

Nanjing Nowking Electric Co., Ltd



产品名称：开口式护线环

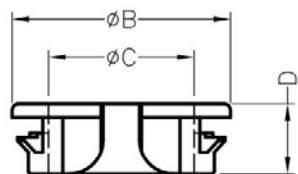
规格型号：COH-009

- ◆ MATERIAL: NYLON 66(UL)
- ◆ FLAME CLASS: 94V-2, 94V-0
- ◆ COLOR: BLACK
- ◆ UNIT: mm

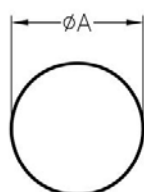
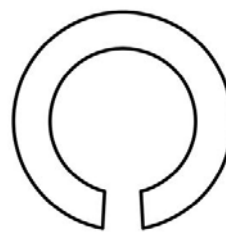
用途：用于机壳的电线出线口，保护电线不受机壳刮伤，装配容易。

采开口式量法

COH-009 结构图



THICKNESS E



MOUNTING HOLE

PART NO	A	B	C	D	E	PACKAGE
COH-009	22.0	25.8	19.5	5.5	0.8~1.0	500

(规格 / 尺寸) 代码说明：

E : 装配板厚

南京诺金电气有限公司

Nanjing Nowking Electric Co., Ltd



产品名称：开口式护线环

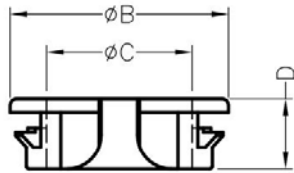
规格型号：COH-010

- ◆ MATERIAL: NYLON 66(UL)
- ◆ FLAME CLASS: 94V-2, 94V-0
- ◆ COLOR: BLACK
- ◆ UNIT: mm

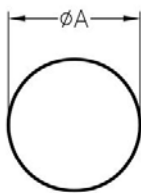
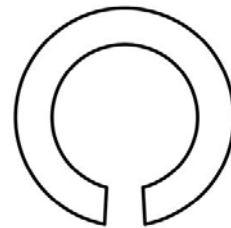
用途：用于机壳的电线出线口，保护电线不受机壳刮伤，装配容易。

采用开口式量法

COH-010 结构图



THICKNESS E



MOUNTING HOLE

PART NO	A	B	C	D	E	PACKAGE
COH-010	23.0	26.4	20.4	5.5	0.8~1.0	500

(规格 / 尺寸) 代码说明：

E : 装配板厚

南京诺金电气有限公司

Nanjing Nowking Electric Co., Ltd



产品名称：开口式护线环

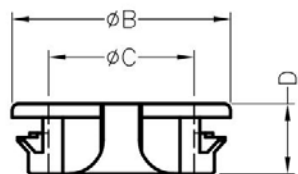
规格型号：COH-011

- ◆ MATERIAL: NYLON 66(UL)
- ◆ FLAME CLASS: 94V-2, 94V-0
- ◆ COLOR: BLACK
- ◆ UNIT: mm

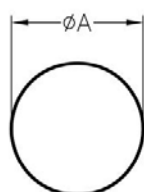
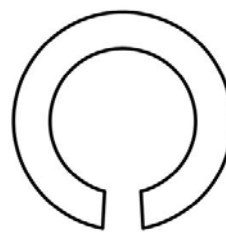
用途：用于机壳的电线出线口，保护电线不受机壳刮伤，装配容易。

采开口式量法

COH-011 结构图



THICKNESS E



MOUNTING HOLE

PART NO	A	B	C	D	E	PACKAGE
COH-011	24.0	27.0	20.8	5.3	0.8~1.0	500

(规格 / 尺寸) 代码说明：

E : 装配板厚

南京诺金电气有限公司

Nanjing Nowking Electric Co., Ltd



产品名称：开口式护线环

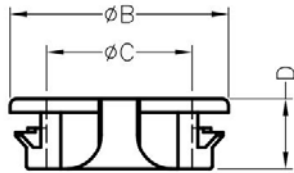
规格型号：COH-012

- ◆ MATERIAL: NYLON 66(UL)
- ◆ FLAME CLASS: 94V-2, 94V-0
- ◆ COLOR: BLACK
- ◆ UNIT: mm

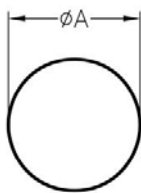
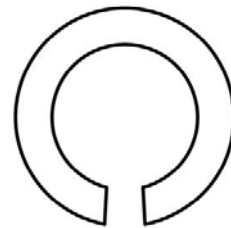
用途：用于机壳的电线出线口，保护电线不受机壳刮伤，装配容易。

采开口式量法

COH-012 结构图



THICKNESS E



MOUNTING HOLE

PART NO	A	B	C	D	E	PACKAGE
COH-012	27.0	34.6	27.0	6.0	0.8~1.0	250

(规格 / 尺寸) 代码说明：

E : 装配板厚

南京诺金电气有限公司

Nanjing Nowking Electric Co., Ltd



产品名称：开口式护线环

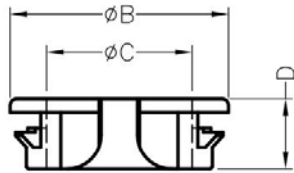
规格型号：COH-013

- ◆ MATERIAL: NYLON 66(UL)
- ◆ FLAME CLASS: 94V-2, 94V-0
- ◆ COLOR: BLACK
- ◆ UNIT: mm

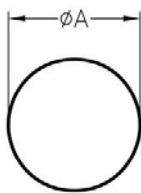
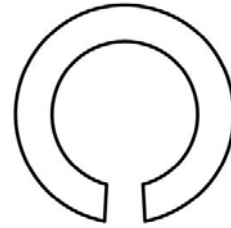
用途：用于机壳的电线出线口，保护电线不受机壳刮伤，装配容易。

采开口式量法

COH-013 结构图



THICKNESS E



MOUNTING HOLE

PART NO	A	B	C	D	E	PACKAGE
COH-013	29.0	34.0	26.3	7.0	0.8~1.0	500

(规格 / 尺寸) 代码说明：

E : 装配板厚

南京诺金电气有限公司

Nanjing Nowking Electric Co., Ltd



产品名称：开口式护线环

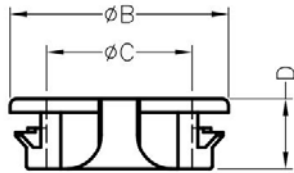
规格型号：COH-014

- ◆ MATERIAL: NYLON 66(UL)
- ◆ FLAME CLASS: 94V-2, 94V-0
- ◆ COLOR: BLACK
- ◆ UNIT: mm

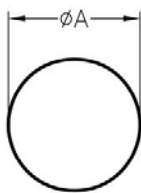
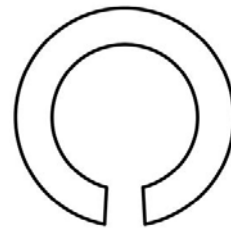
用途：用于机壳的电线出线口，保护电线不受机壳刮伤，装配容易。

采开口式量法

COH-014 结构图



THICKNESS E



MOUNTING HOLE

PART NO	A	B	C	D	E	PACKAGE
COH-014	30.0	36.25	28.0	7.0	0.8~1.0	500

(规格 / 尺寸) 代码说明：

E : 装配板厚

南京诺金电气有限公司

Nanjing Nowking Electric Co., Ltd



产品名称：开口式护线环

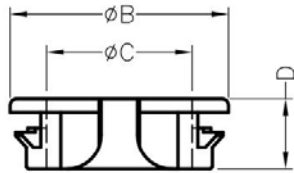
规格型号：COH-015

- ◆ MATERIAL: NYLON 66(UL)
- ◆ FLAME CLASS: 94V-2, 94V-0
- ◆ COLOR: BLACK
- ◆ UNIT: mm

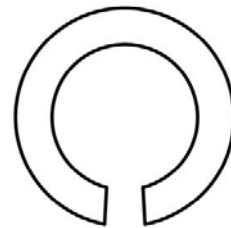
用途：用于机壳的电线出线口，保护电线不受机壳刮伤，装配容易。

采开口式量法

COH-015 结构图



THICKNESS E



MOUNTING HOLE

PART NO	A	B	C	D	E	PACKAGE
COH-015	32.0	36.9	30.0	6.7	0.8~1.0	500

(规格 / 尺寸) 代码说明：

E : 装配板厚

南京诺金电气有限公司

Nanjing Nowking Electric Co., Ltd



产品名称：开口式护线环

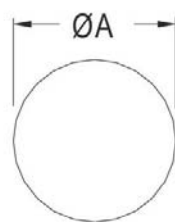
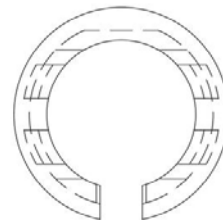
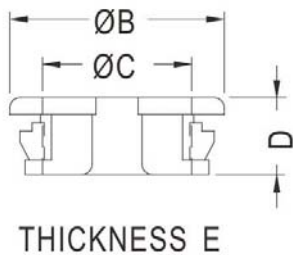
规格型号：COH-016

- ◆ MATERIAL: NYLON 66(UL)
- ◆ FLAME CLASS: 94V-2, 94V-0
- ◆ COLOR: BLACK
- ◆ UNIT: mm

用途：用于机壳的电线出线口，保护电线不受机壳刮伤，装配容易。

采开口式量法

COH-016 结构图



MOUNTING HOLE

PART NO	A	B	C	D	E	PACKAGE
COH-016	9.5	12.4	7.6	6.0	0.8~1.2	1000

(规格 / 尺寸) 代码说明：

E : 装配板厚

南京诺金电气有限公司

Nanjing Nowking Electric Co., Ltd



产品名称：开口式护线环

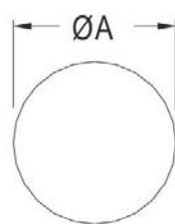
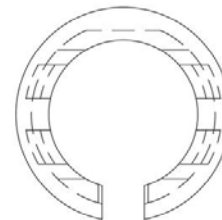
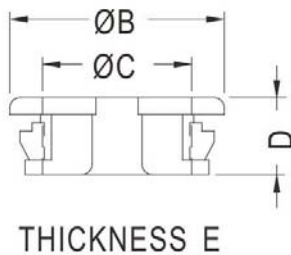
规格型号：COH-017

- ◆ MATERIAL: NYLON 66(UL)
- ◆ FLAME CLASS: 94V-2, 94V-0
- ◆ COLOR: BLACK
- ◆ UNIT: mm

用途：用于机壳的电线出线口，保护电线不受机壳刮伤，装配容易。

采开口式量法

COH-017 结构图



MOUNTING HOLE

PART NO	A	B	C	D	E	PACKAGE
COH-017	12.7	16.8	10.8	7.3	0.8~1.2	1000

(规格 / 尺寸) 代码说明：

E : 装配板厚

南京诺金电气有限公司

Nanjing Nowking Electric Co., Ltd



产品名称：开口式护线环

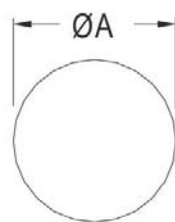
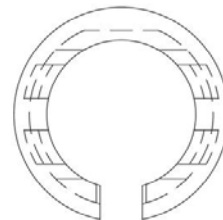
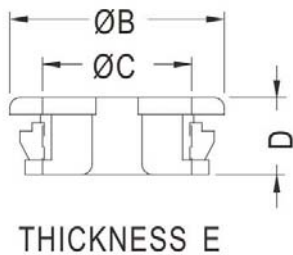
规格型号：COH-018

- ◆ MATERIAL: NYLON 66(UL)
- ◆ FLAME CLASS: 94V-2, 94V-0
- ◆ COLOR: BLACK
- ◆ UNIT: mm

用途：用于机壳的电线出线口，保护电线不受机壳刮伤，装配容易。

采开口式量法

COH-018 结构图



MOUNTING HOLE

PART NO	A	B	C	D	E	PACKAGE
COH-018	15.9	20.3	14.1	7.3	0.8~1.0	500

(规格 / 尺寸) 代码说明：

E : 装配板厚

南京诺金电气有限公司

Nanjing Nowking Electric Co., Ltd



产品名称：开口式护线环

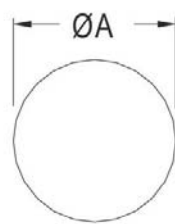
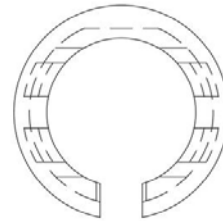
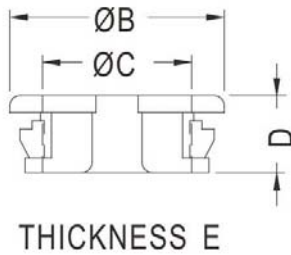
规格型号：COH-019

- ◆ MATERIAL: NYLON 66(UL)
- ◆ FLAME CLASS: 94V-2, 94V-0
- ◆ COLOR: BLACK
- ◆ UNIT: mm

用途：用于机壳的电线出线口，保护电线不受机壳刮伤，装配容易。

采开口式量法

COH-019 结构图



MOUNTING HOLE

PART NO	A	B	C	D	E	PACKAGE
COH-019	19.0	22.5	16.5	7.3	0.8~1.0	500

(规格 / 尺寸) 代码说明：

E : 装配板厚

南京诺金电气有限公司

Nanjing Nowking Electric Co., Ltd



产品名称：开口式护线环

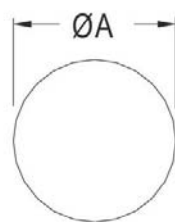
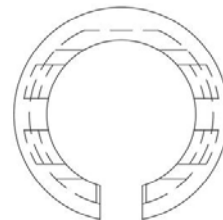
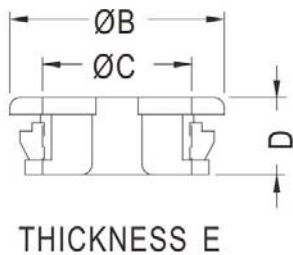
规格型号：COH-020

- ◆ MATERIAL: NYLON 66(UL)
- ◆ FLAME CLASS: 94V-2, 94V-0
- ◆ COLOR: BLACK
- ◆ UNIT: mm

用途：用于机壳的电线出线口，保护电线不受机壳刮伤，装配容易。

采开口式量法

COH-020 结构图



MOUNTING HOLE

PART NO	A	B	C	D	E	PACKAGE
COH-020	22.0	26.0	20.0	7.3	0.8~1.0	500

(规格 / 尺寸) 代码说明：

E : 装配板厚

南京诺金电气有限公司

Nanjing Nowking Electric Co., Ltd



产品名称：开口式护线环

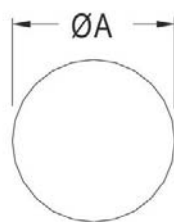
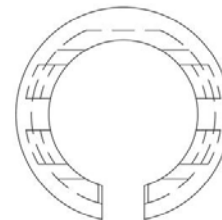
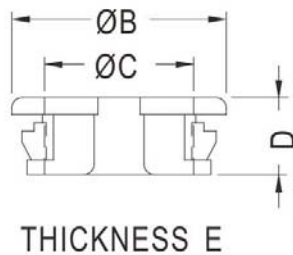
规格型号：COH-021

- ◆ MATERIAL: NYLON 66(UL)
- ◆ FLAME CLASS: 94V-2, 94V-0
- ◆ COLOR: BLACK
- ◆ UNIT: mm

用途：用于机壳的电线出线口，保护电线不受机壳刮伤，装配容易。

采开口式量法

COH-021 结构图



MOUNTING HOLE

PART NO	A	B	C	D	E	PACKAGE
COH-021	25.4	28.6	22.0	7.9	0.8~1.6	500

(规格 / 尺寸) 代码说明：

E : 装配板厚

南京诺金电气有限公司

Nanjing Nowking Electric Co., Ltd



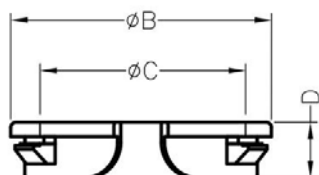
产品名称：开口式护线环

规格型号：COH-022

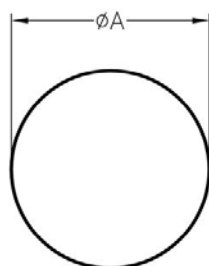
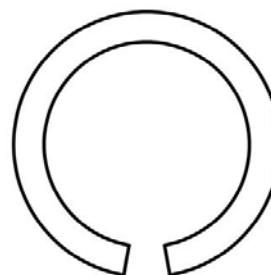
- ◆ MATERIAL: NYLON 66(UL)
- ◆ FLAME CLASS: 94V-2, 94V-0
- ◆ COLOR: BLACK
- ◆ UNIT: mm

用途：用于机壳的电线出线口，保护电线不受机壳刮伤，装配容易。

COH-022 结构图



THICKNESS E



MOUNTING HOLE

PART NO	A	B	C	D	E	PACKAGE
COH-022	22.0	26.4	20.3	5.5	0.6~0.8	500

(规格 / 尺寸) 代码说明：

E : 装配板厚

产品名称：开口式护线环

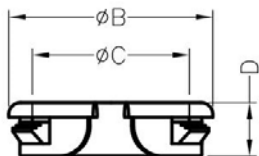
规格型号：COH-023

- ◆ MATERIAL: NYLON 66(UL)
- ◆ FLAME CLASS: 94V-2, 94V-0
- ◆ COLOR: BLACK
- ◆ UNIT: mm

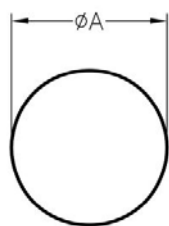
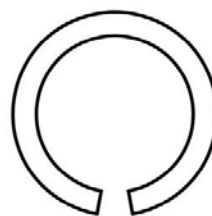
用途：用于机壳的电线出线口，保护电线不受机壳刮伤，装配容易。



COH-023 结构图



THICKNESS E



MOUNTING HOLE

PART NO	A	B	C	D	E	PACKAGE
COH-023	25.4	30.3	23.3	8.0	0.6~1.6	500

(规格 / 尺寸) 代码说明：

E : 装配板厚

产品名称：开口式护线环

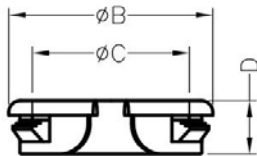
规格型号：COH-024

- ◆ MATERIAL: NYLON 66(UL)
- ◆ FLAME CLASS: 94V-2, 94V-0
- ◆ COLOR: BLACK
- ◆ UNIT: mm

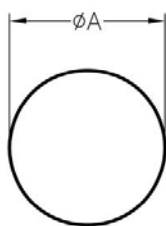
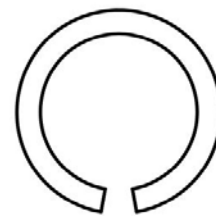
用途：用于机壳的电线出线口，保护电线不受机壳刮伤，装配容易。



COH-024 结构图



THICKNESS E



MOUNTING HOLE

PART NO	A	B	C	D	E	PACKAGE
COH-024	25.0	30.3	23.3	8.0	0.6~1.6	500

(规格 / 尺寸) 代码说明：

E : 装配板厚

产品名称：开口式护线环

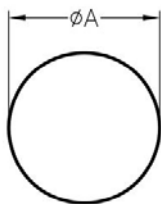
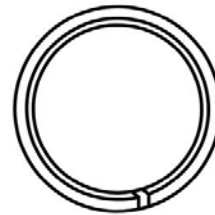
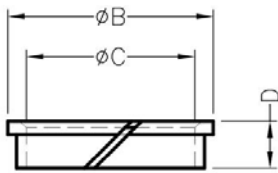
规格型号：COH-025

- ◆ MATERIAL 1: NYLON 66(UL)
- ◆ FLAME CLASS 1: 94V-2, 94V-0
- ◆ COLOR 1: BLACK, NATURAL
- ◆ MATERIAL 2: POM(UL)
- ◆ FLAME CLASS 2: 94HB
- ◆ COLOR 2: NATURAL
- ◆ UNIT: mm

用途：用于机壳的电线出线口，保护电线不受机壳刮伤，装配容易。



COH-025 结构图

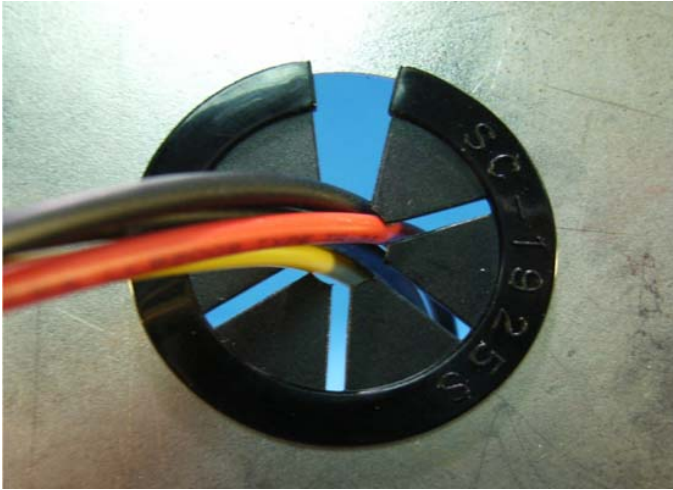


MOUNTING HOLE

PART NO	A	B	C	D	-	PACKAGE
COH-025	28.0	30.5	25.0	7.0	-	500

南京诺金电气有限公司

Nanjing Nowking Electric Co., Ltd



产品名称：开口式护线环

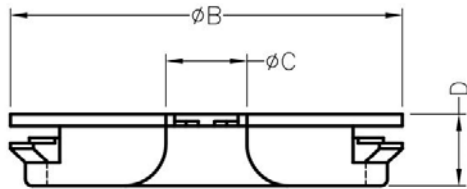
规格型号：COH-026

- ◆ MATERIAL: NYLON 66(UL)
- ◆ FLAME CLASS: 94V-2, 94V-0
- ◆ COLOR: BLACK
- ◆ UNIT: mm

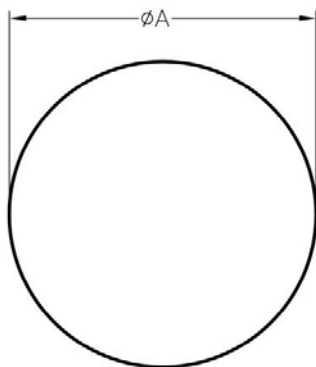
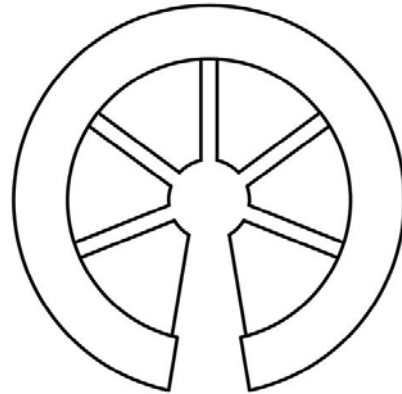
用途：用于机壳的电线出线口，保护电线不受机壳刮伤，装配容易。

采开口式量法

COH-026 结构图



THICKNESS E



MOUNTING HOLE

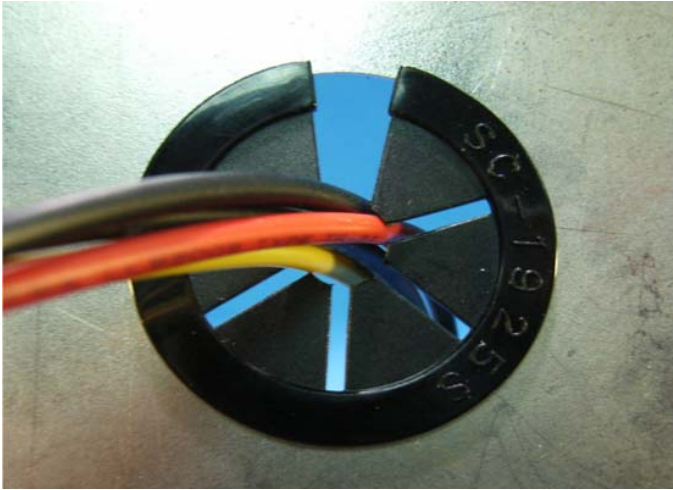
PART NO	A	B	C	D	E	PACKAGE
COH-026	25.4	29.0	6.0	5.3	0.8~1.0	250

(规格 / 尺寸) 代码说明：

E : 装配板厚

南京诺金电气有限公司

Nanjing Nowking Electric Co., Ltd



产品名称：开口式护线环

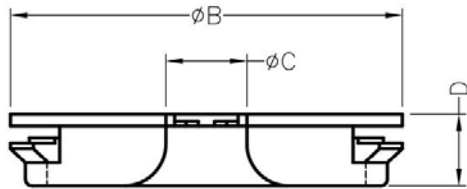
规格型号：COH-027

- ◆ MATERIAL: NYLON 66(UL)
- ◆ FLAME CLASS: 94V-2, 94V-0
- ◆ COLOR: BLACK
- ◆ UNIT: mm

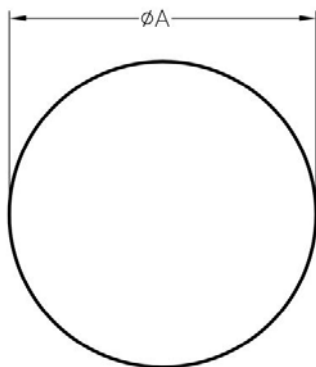
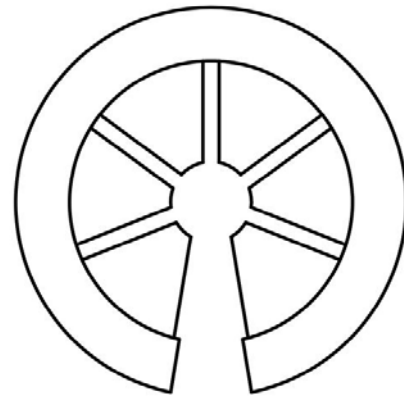
用途：用于机壳的电线出线口，保护电线不受机壳刮伤，装配容易。

采开口式量法

COH-027 结构图



THICKNESS E



MOUNTING HOLE

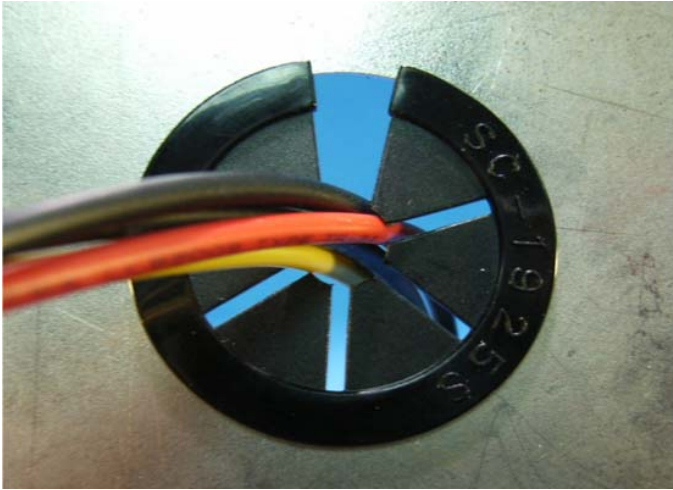
PART NO	A	B	C	D	E	PACKAGE
COH-027	25.4	29.0	6.0	11.4	0.8~3.0	250

(规格 / 尺寸) 代码说明：

E : 装配板厚

南京诺金电气有限公司

Nanjing Nowking Electric Co., Ltd



产品名称：开口式护线环

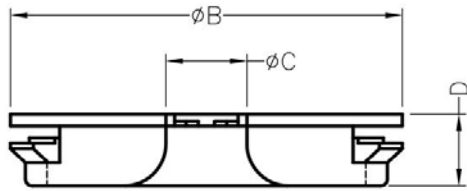
规格型号：COH-028

- ◆ MATERIAL: NYLON 66(UL)
- ◆ FLAME CLASS: 94V-2, 94V-0
- ◆ COLOR: BLACK
- ◆ UNIT: mm

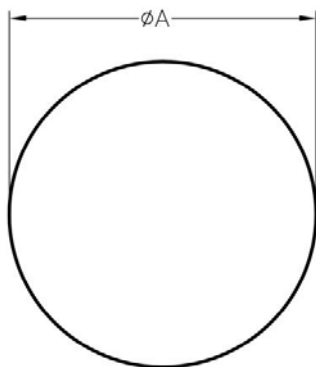
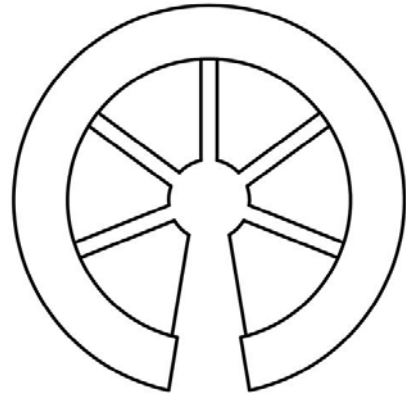
用途：用于机壳的电线出线口，保护电线不受机壳刮伤，装配容易。

采开口式量法

COH-028 结构图



THICKNESS E



MOUNTING HOLE

PART NO	A	B	C	D	E	PACKAGE
COH-028	19.0	22.6	3.5	9.75	0.8~3.2	500

(规格 / 尺寸) 代码说明：

E : 装配板厚

南京诺金电气有限公司

Nanjing Nowking Electric Co., Ltd



产品名称：开口式护线环

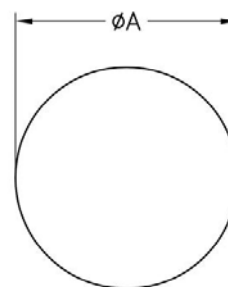
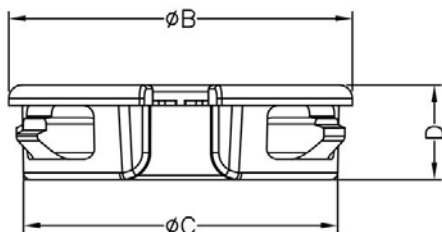
规格型号：COH-029

- ◆ MATERIAL: NYLON 66(UL)
- ◆ FLAME CLASS: 94V-2, 94V-0
- ◆ COLOR: BLACK
- ◆ UNIT: mm

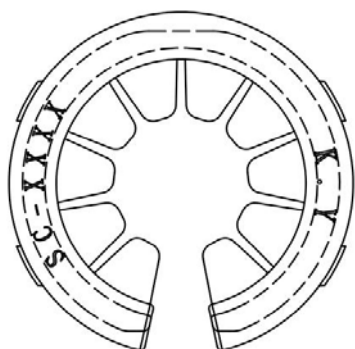
用途：用于机壳的电线出线口，保护电线不受机壳刮伤，装配容易。

可使用同等材质
内缩为正常现象。

COH-029 结构图



MOUNTING HOLE
CHASSIS THICKNESS : E



PART NO	A	B	C	D	E	PACKAGE
COH-029	Ø22.2	Ø25.5	Ø23.3	7.0	0.6~1.2	250

(规格 / 尺寸) 代码说明：

E : 装配板厚

南京诺金电气有限公司

Nanjing Nowking Electric Co., Ltd



产品名称：开口式护线环

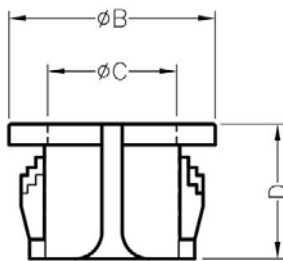
规格型号：COH-030

- ◆ MATERIAL: NYLON 66(UL)
- ◆ FLAME CLASS: 94V-2, 94V-0
- ◆ COLOR: BLACK
- ◆ UNIT: mm

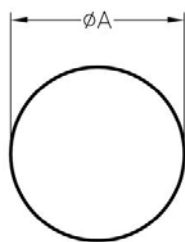
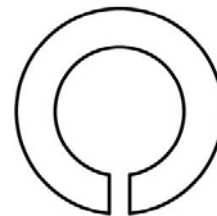
用途：用于机壳的电线出线口，保护电线不受机壳刮伤，装配容易。

采开口式量法

COH-030 结构图



THICKNESS E



MOUNTING HOLE

PART NO	A	B	C	D	E	PACKAGE
COH-030	Ø9.5	Ø11.9	Ø7.3	6.5	0.6~1.6	1000

(规格 / 尺寸) 代码说明：

E : 装配板厚

南京诺金电气有限公司

Nanjing Nowking Electric Co., Ltd



产品名称：开口式护线环

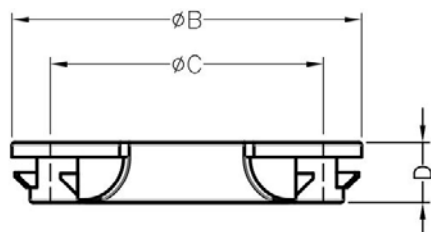
规格型号：COH-031

- ◆ MATERIAL: NYLON 66(UL)
- ◆ FLAME CLASS: 94V-2, 94V-0
- ◆ COLOR: BLACK
- ◆ UNIT: mm

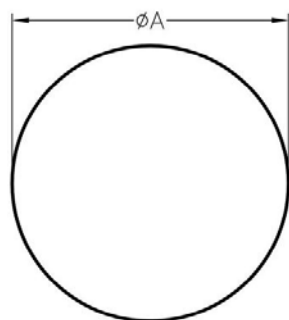
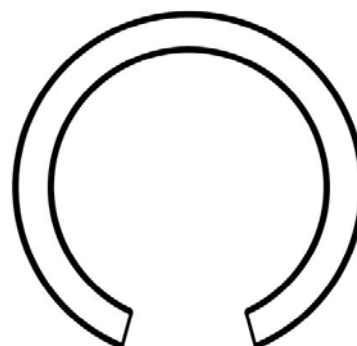
用途：用于机壳的电线出线口，保护电线不受机壳刮伤，装配容易。

采开口式量法

COH-031 结构图



THICKNESS E



MOUNTING HOLE

PART NO	A	B	C	D	E	PACKAGE
COH-031	27.0	34.6	27.0	6.0	0.8~1.2	500

(规格 / 尺寸) 代码说明：

E : 装配板厚

南京诺金电气有限公司

Nanjing Nowking Electric Co., Ltd



产品名称：开口式护线环

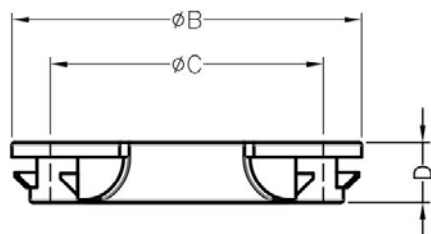
规格型号：COH-032

- ◆ MATERIAL: NYLON 66(UL)
- ◆ FLAME CLASS: 94V-2, 94V-0
- ◆ COLOR: BLACK
- ◆ UNIT: mm

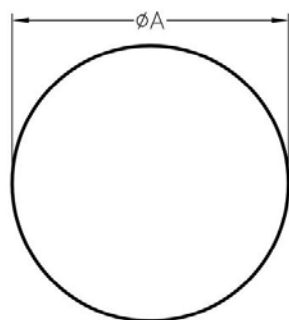
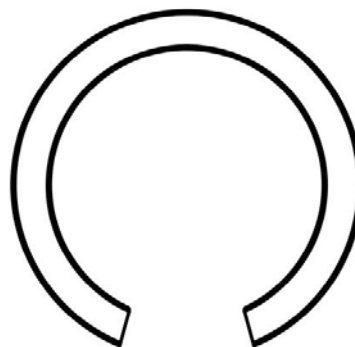
用途：用于机壳的电线出线口，保护电线不受机壳刮伤，装配容易。

采开口式量法

COH-032 结构图



THICKNESS E



MOUNTING HOLE

PART NO	A	B	C	D	E	PACKAGE
COH-032	29.0	34.6	27.0	7.0	0.8~1.2	500

(规格 / 尺寸) 代码说明：

E : 装配板厚

南京诺金电气有限公司

Nanjing Nowking Electric Co., Ltd



产品名称：开口式护线环

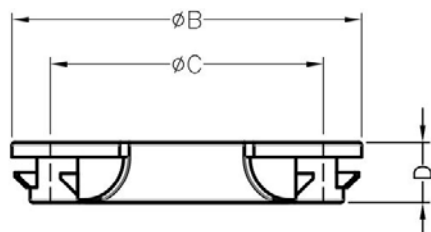
规格型号：COH-033

- ◆ MATERIAL: NYLON 66(UL)
- ◆ FLAME CLASS: 94V-2, 94V-0
- ◆ COLOR: BLACK
- ◆ UNIT: mm

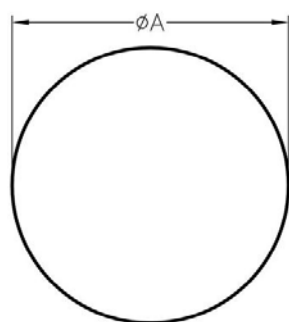
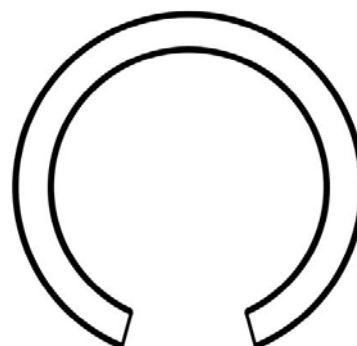
用途：用于机壳的电线出线口，保护电线不受机壳刮伤，装配容易。

采开口式量法

COH-033 结构图



THICKNESS E



MOUNTING HOLE

PART NO	A	B	C	D	E	PACKAGE
COH-033	32.0	36.9	30.0	6.7	0.8~1.2	500

(规格 / 尺寸) 代码说明：

E : 装配板厚

南京诺金电气有限公司

Nanjing Nowking Electric Co., Ltd



产品名称：开口式护线环

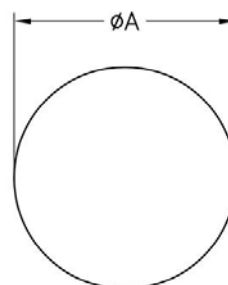
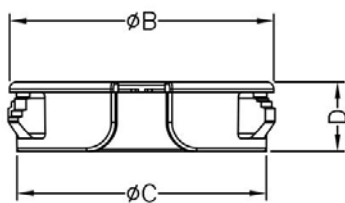
规格型号：COH-034

- ◆ MATERIAL: NYLON 66(UL)
- ◆ FLAME CLASS: 94V-2, 94V-0
- ◆ COLOR: BLACK
- ◆ UNIT: mm

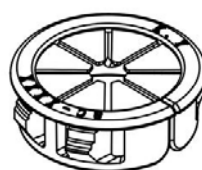
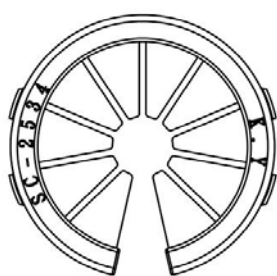
用途：用于机壳的电线出线口，保护电线不受机壳刮伤，装配容易。

可使用同等材质
内缩为正常现象

COH-034 结构图



MOUNTING HOLE
CHASSIS THICKNESS : E



CLOSE



OPEN

PART NO	A	B	C	D	E	PACKAGE
COH-034	12.7	15.3	13.1	9.8	0.8~3.3	1000

(规格 / 尺寸) 代码说明：

E : 装配板厚

南京诺金电气有限公司

Nanjing Nowking Electric Co., Ltd



产品名称：开口式护线环

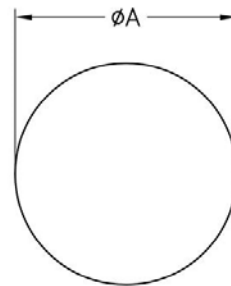
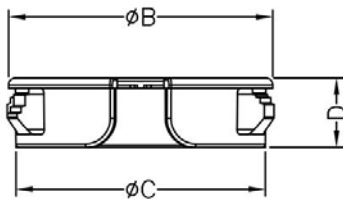
规格型号：COH-035

- ◆ MATERIAL: NYLON 66(UL)
- ◆ FLAME CLASS: 94V-2, 94V-0
- ◆ COLOR: BLACK
- ◆ UNIT: mm

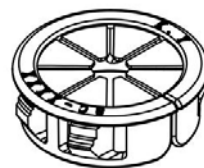
用途：用于机壳的电线出线口，保护电线不受机壳刮伤，装配容易。

可使用同等材质
内缩为正常现象

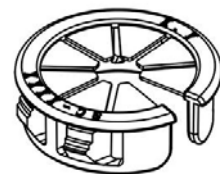
COH-035 结构图



MOUNTING HOLE
CHASSIS THICKNESS : E



CLOSE



OPEN

PART NO	A	B	C	D	E	PACKAGE
COH-035	15.9	18.8	16.6	10.3	0.8~3.3	1000

(规格 / 尺寸) 代码说明：

E : 装配板厚

南京诺金电气有限公司

Nanjing Nowking Electric Co., Ltd



产品名称：开口式护线环

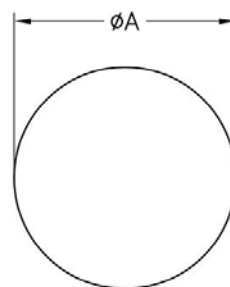
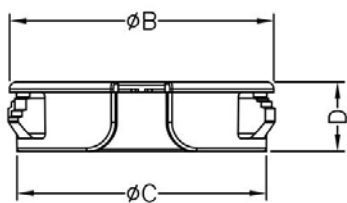
规格型号：COH-036

- ◆ MATERIAL: NYLON 66(UL)
- ◆ FLAME CLASS: 94V-2, 94V-0
- ◆ COLOR: BLACK
- ◆ UNIT: mm

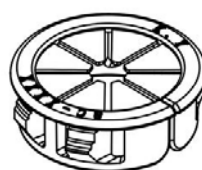
用途：用于机壳的电线出线口，保护电线不受机壳刮伤，装配容易。

可使用同等材质
内缩为正常现象

COH-036 结构图



MOUNTING HOLE
CHASSIS THICKNESS : E



CLOSE



OPEN

PART NO	A	B	C	D	E	PACKAGE
COH-036	22.2	25.5	23.3	10.3	0.8~3.3	250

(规格 / 尺寸) 代码说明：

E : 装配板厚

南京诺金电气有限公司

Nanjing Nowking Electric Co., Ltd



产品名称：开口式护线环

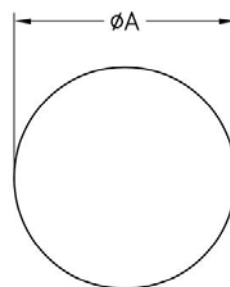
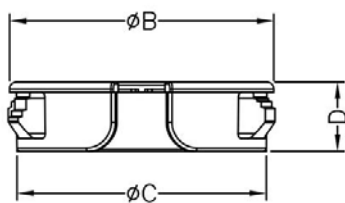
规格型号：COH-037

- ◆ MATERIAL: NYLON 66(UL)
- ◆ FLAME CLASS: 94V-2, 94V-0
- ◆ COLOR: BLACK
- ◆ UNIT: mm

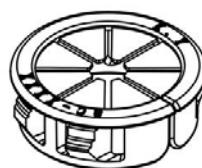
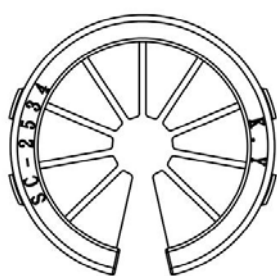
用途：用于机壳的电线出线口，保护电线不受机壳刮伤，装配容易。

可使用同等材质
内缩为正常现象

COH-037 结构图



MOUNTING HOLE
CHASSIS THICKNESS : E



CLOSE



OPEN

PART NO	A	B	C	D	E	PACKAGE
COH-037	27.8	31.5	29.3	10.3	0.8~3.3	100

(规格 / 尺寸) 代码说明：

E : 装配板厚

南京诺金电气有限公司

Nanjing Nowking Electric Co., Ltd



产品名称：开口式护线环

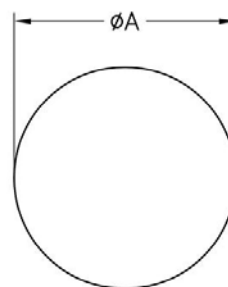
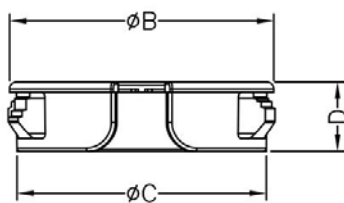
规格型号：COH-038

- ◆ MATERIAL: NYLON 66(UL)
- ◆ FLAME CLASS: 94V-2, 94V-0
- ◆ COLOR: BLACK
- ◆ UNIT: mm

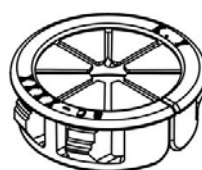
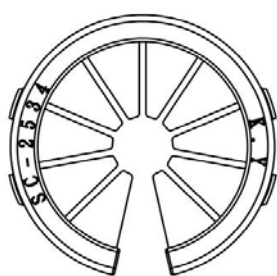
用途：用于机壳的电线出线口，保护电线不受机壳刮伤，装配容易。

可使用同等材质
内缩为正常现象

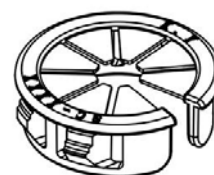
COH-038 结构图



MOUNTING HOLE
CHASSIS THICKNESS : E



CLOSE



OPEN

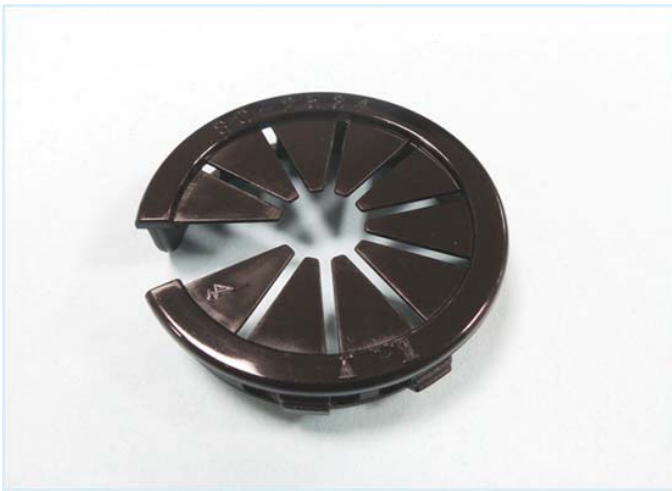
PART NO	A	B	C	D	E	PACKAGE
COH-038	31.8	36.6	0.5	10.3	0.8~3.3	100

(规格 / 尺寸) 代码说明：

E : 装配板厚

南京诺金电气有限公司

Nanjing Nowking Electric Co., Ltd



产品名称：开口式护线环

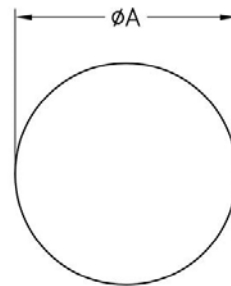
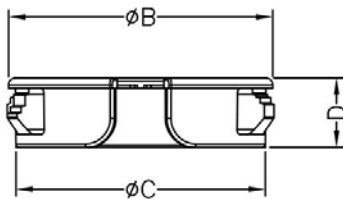
规格型号：COH-039

- ◆ MATERIAL: NYLON 66(UL)
- ◆ FLAME CLASS: 94V-2, 94V-0
- ◆ COLOR: BLACK
- ◆ UNIT: mm

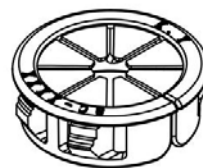
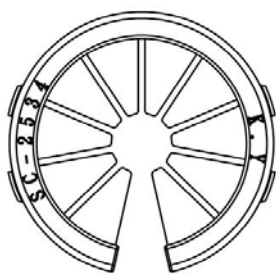
用途：用于机壳的电线出线口，保护电线不受机壳刮伤，装配容易。

可使用同等材质
内缩为正常现象

COH-039 结构图



MOUNTING HOLE
CHASSIS THICKNESS : E



CLOSE



OPEN

PART NO	A	B	C	D	E	PACKAGE
COH-039	34.9	39.2	37.0	10.3	0.8~3.3	100

(规格 / 尺寸) 代码说明：

E : 装配板厚

南京诺金电气有限公司

Nanjing Nowking Electric Co., Ltd



产品名称：开口式护线环

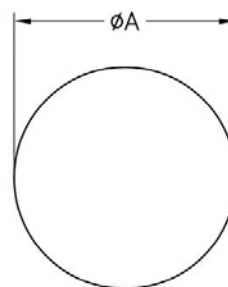
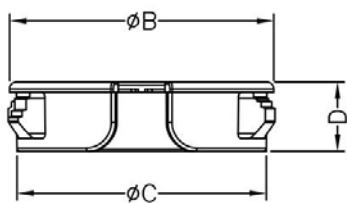
规格型号：COH-040

- ◆ MATERIAL: NYLON 66(UL)
- ◆ FLAME CLASS: 94V-2, 94V-0
- ◆ COLOR: BLACK
- ◆ UNIT: mm

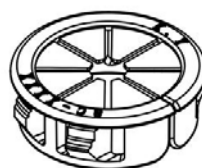
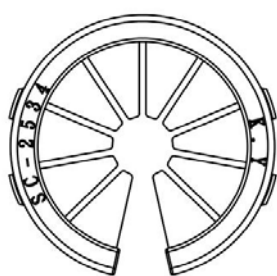
用途：用于机壳的电线出线口，保护电线不受机壳刮伤，装配容易。

可使用同等材质
内缩为正常现象

COH-040 结构图



MOUNTING HOLE
CHASSIS THICKNESS : E



CLOSE



OPEN

PART NO	A	B	C	D	E	PACKAGE
COH-040	38.1	42.6	40.4	10.7	0.8~3.3	100

(规格 / 尺寸) 代码说明：

E : 装配板厚

