

LED导光柱 LED PIPE



用途：可快速将 Ø5 LED 固定于机器面板上

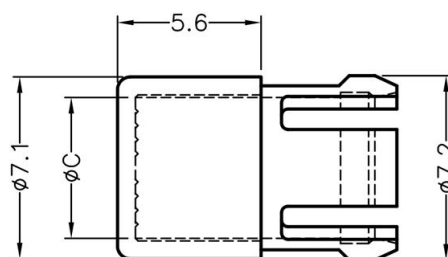
MATERIAL : PC(UL)

FLAME CLASS : 94V-0,94V-2

COLOR : TRANSPARENT

UNIT : mm

2



CHASSIS $\phi 6.35$
THICKNESS 3.0

PART NO	C	PACKAGE
LEDLP-117	$\phi 5.2$	1000

LED导光柱 LED PIPE



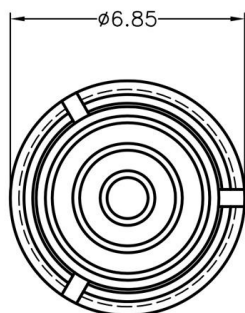
用途：可快速将Ø5 LED固定于机器面板上

MATERIAL : PC(UL)

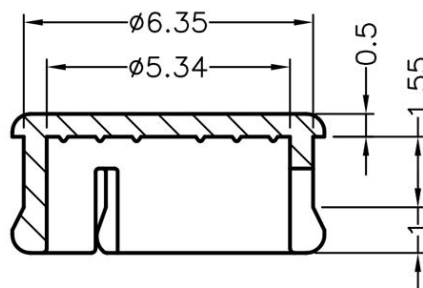
FLAME CLASS : 94V-0,94V-2

COLOR : TRANSPARENT

UNIT : mm



MOUNTING HOLE $\phi 6.35$



PART NO	PACKAGE
LEDLP-118	1000